

## Data Sheet Biofidel-Dummy

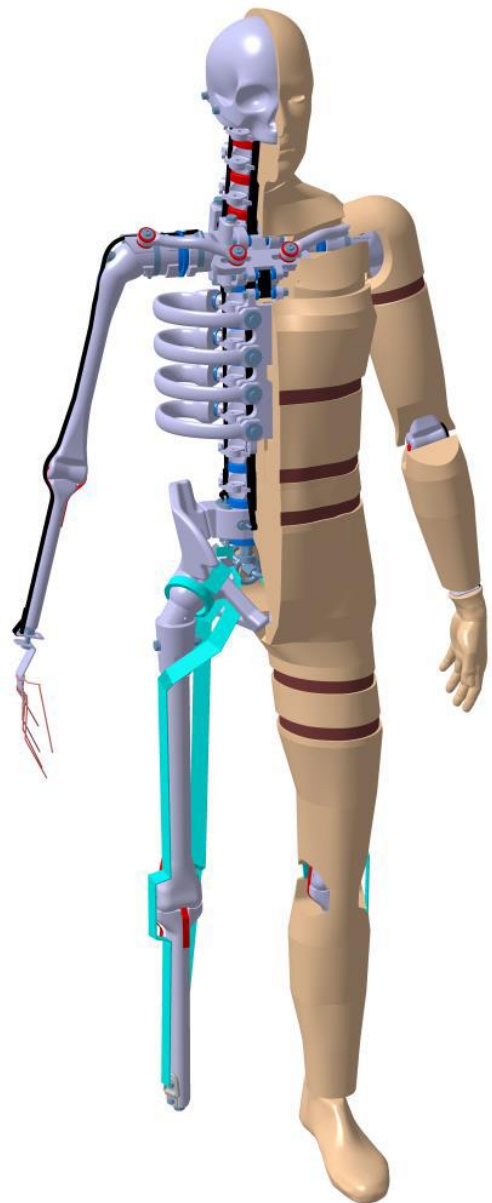
The Biofidel-Dummy shows a high degree of agreement with humans regarding its biofidelity. Strengths, structure, overall dimensions and dimensions of the individual body parts as well as the individual parts and total masses are oriented to the anthropomorphic model and correspond in the 50M version to the 50-percentile male adult<sup>1</sup>.

### General data 50M:

Height:	1,75m
Weight:	79 kg
Age:	18 – 65 years
BMI:	25,8 kg/m <sup>2</sup>
Bone components:	42
tissue components:	12

### Materials:

Bone substitute:	Epoxy resin aluminum powder
Ligaments and tendons substitute:	Polypropylene straps
Tissue substitute:	silicone and acrylic
Skin substitute:	chloroprene rubber and latex



<sup>1</sup> DIN 33402-2: Ergonomie - Körpermaße des Menschen - Teil 2: Deutsches Institut für Normung e. V. Berlin, 2005